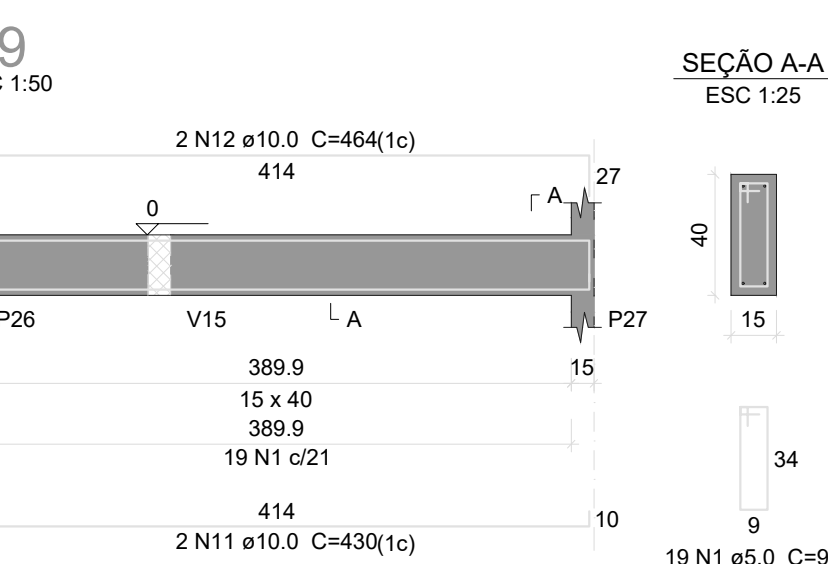
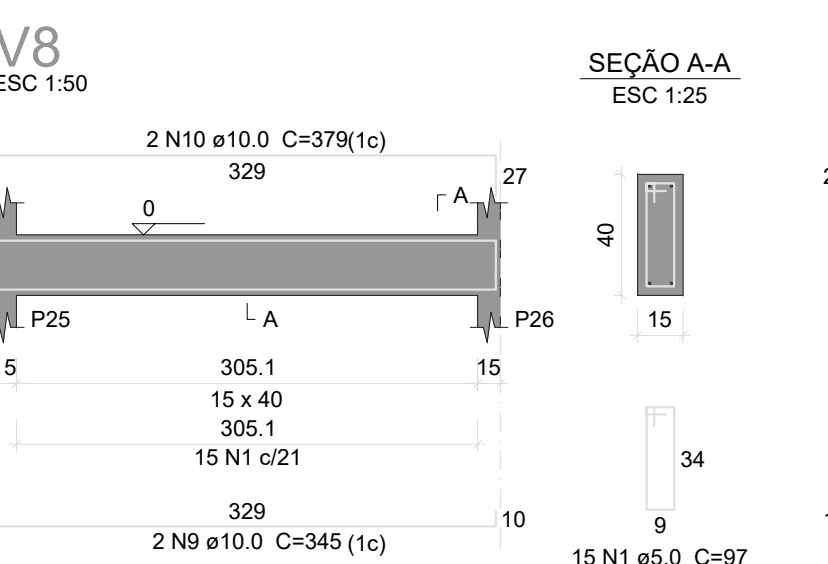
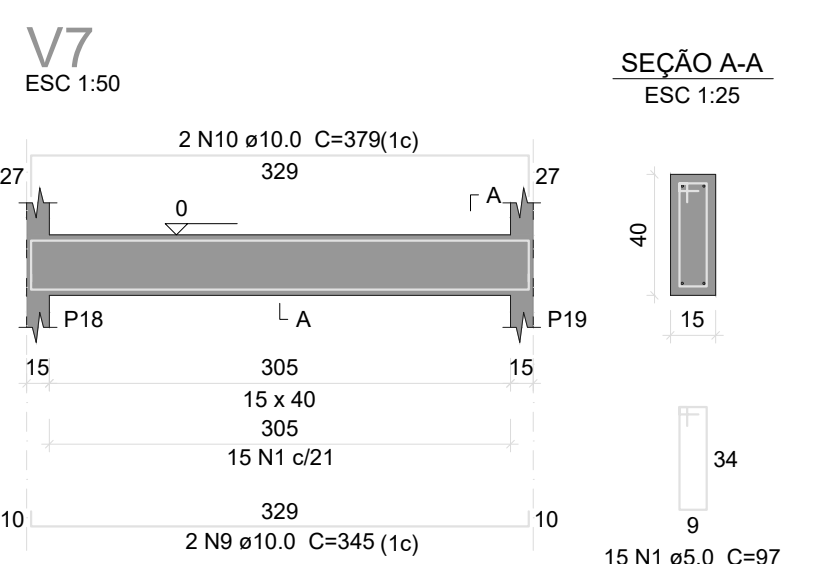
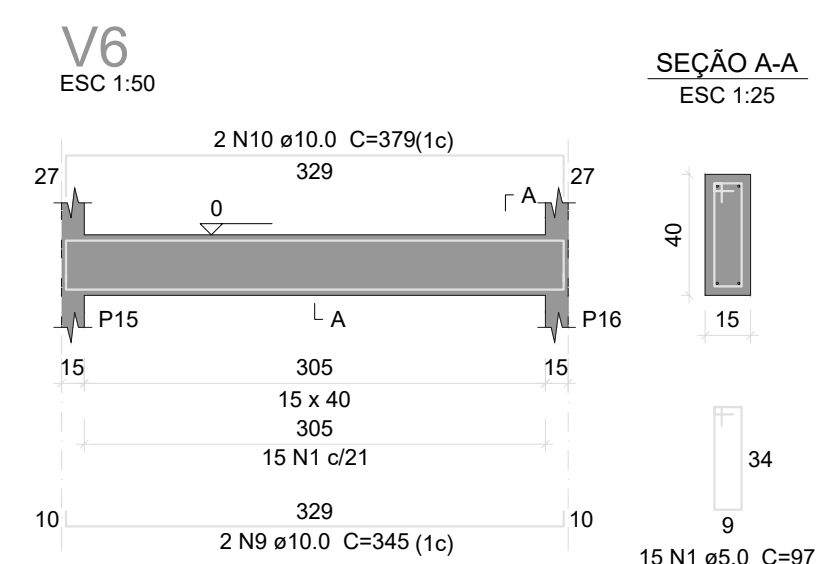
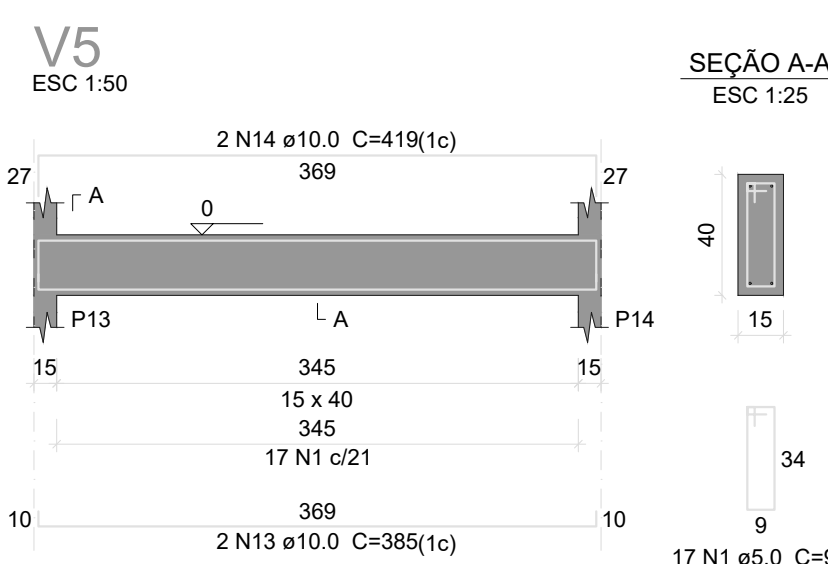


Relação do aço

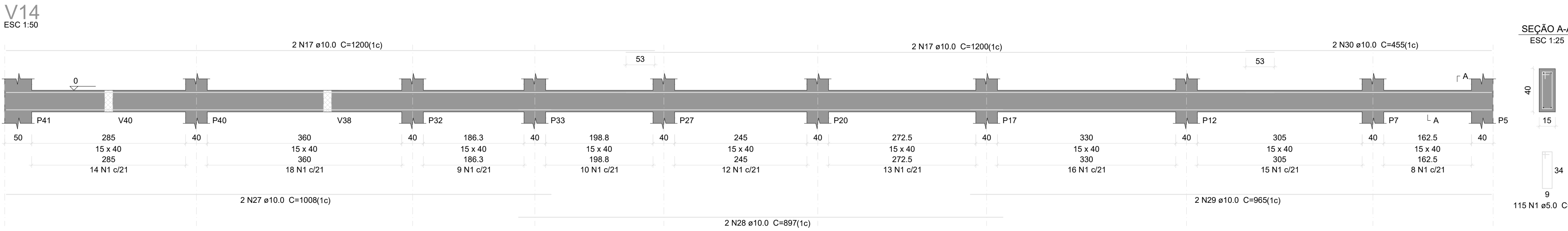
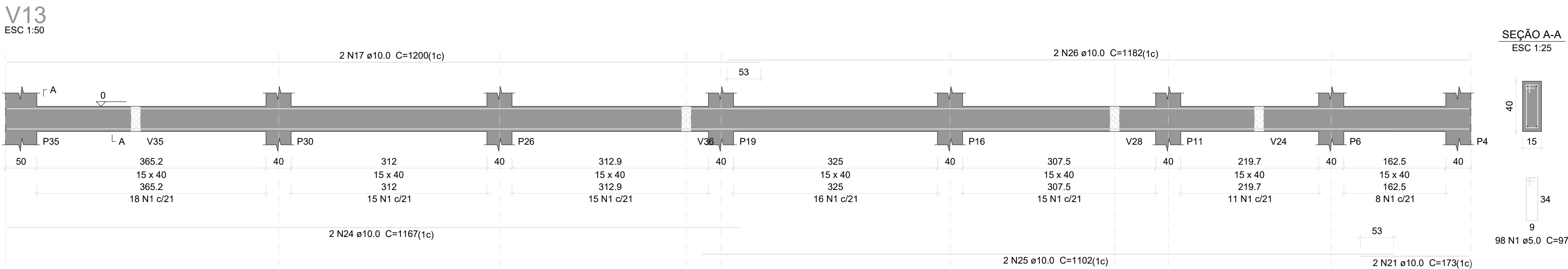
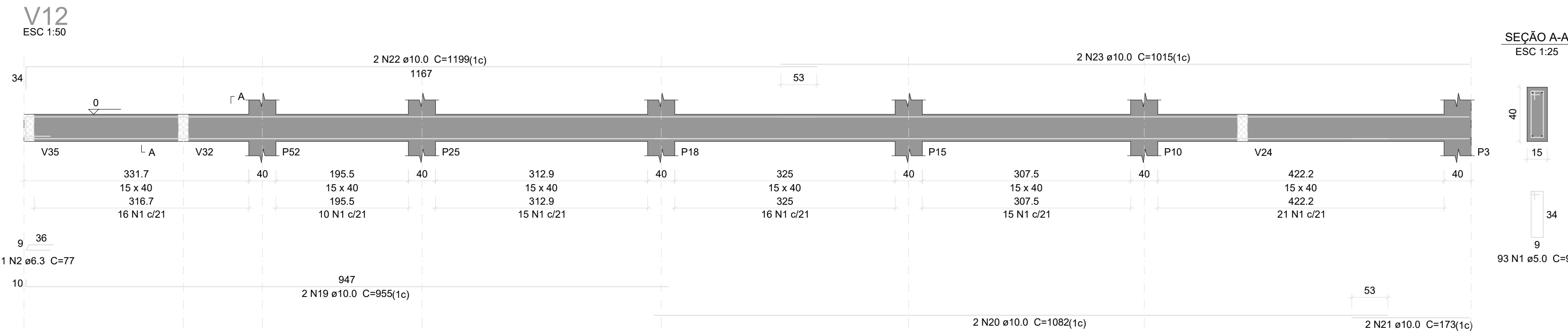
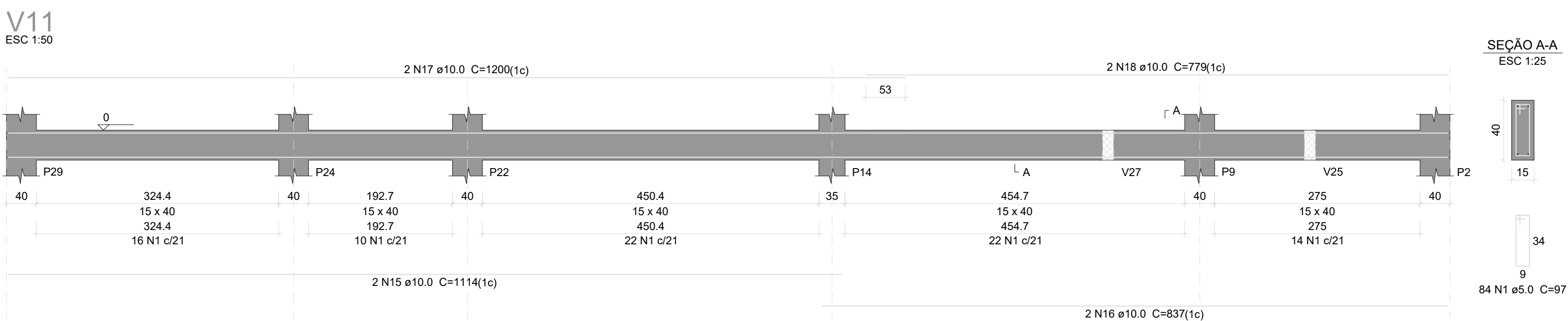
ÁÇO	N	DIAM (mm)	QUANT	C.UNIT (cm)	C.TOTAL (cm)
CA60	1	5.0	582	97	56454
CA50	2	6.3	3	77	231
	3	10.0	2	948	1896
	4	10.0	2	448	896
	5	10.0	2	1198	2396
	6	10.0	2	224	448
	7	10.0	2	377	754
	8	10.0	2	394	788
	9	10.0	8	345	2760
	10	10.0	8	379	3032
	11	10.0	4	430	1720
	12	10.0	4	464	1856
	13	10.0	2	385	770
	14	10.0	2	419	838
	15	10.0	2	1114	2228
	16	10.0	2	837	1674
	17	10.0	8	1200	9600
	18	10.0	2	779	1558
	19	10.0	2	955	1910
	20	10.0	2	1082	2164
	21	10.0	4	173	692
	22	10.0	2	1199	2398
	23	10.0	2	1015	2030
	24	10.0	2	1167	2334
	25	10.0	2	1102	2204
	26	10.0	2	1182	2364
	27	10.0	2	1008	2016
	28	10.0	2	897	1794
	29	10.0	2	965	1930
	30	10.0	2	455	910



Resumo do aço

ÁÇO	DIAM (mm)	C.TOTAL (m)	PESO + 10 % (kg)
CA50	6.3	2.4	0.6
CA60	10.0	559.6	379.8
PESO TOTAL (kg)	5.0	564.6	95.7
CA50	380.4		
CA60	95.7		

Volume de concreto (C-25) = 7.11 m³
Área de forma = 112.63 m²



LAZARO THOME DA SILVA NETO
ENG. CIVIL
CREA/SP: 5070668785

PREFEITURA MUNICIPAL DE DIVISA NOVA
CNPJ:18.243.279/0001-08

CONCRETO fck = 25 MPa ECS = ver na planta	0001
CLIENTE PREFEITURA MUNICIPAL DE DIVISA NOVA - MG	001
OBJETO CONSTRUÇÃO DO PRÉDIO DO AMULATÓRIO E LABORATÓRIO	01
PROJETO ARMAÇÃO DAS VIGAS FUNDAÇÃO	
DATA 20/05/2025	ESCALA 1:50
DESCRIÇÃO EST-01-FUN-VIG	CODIGO
PROJETO ENG. LAZARO NETO BRAGA/SP: 5070668785	