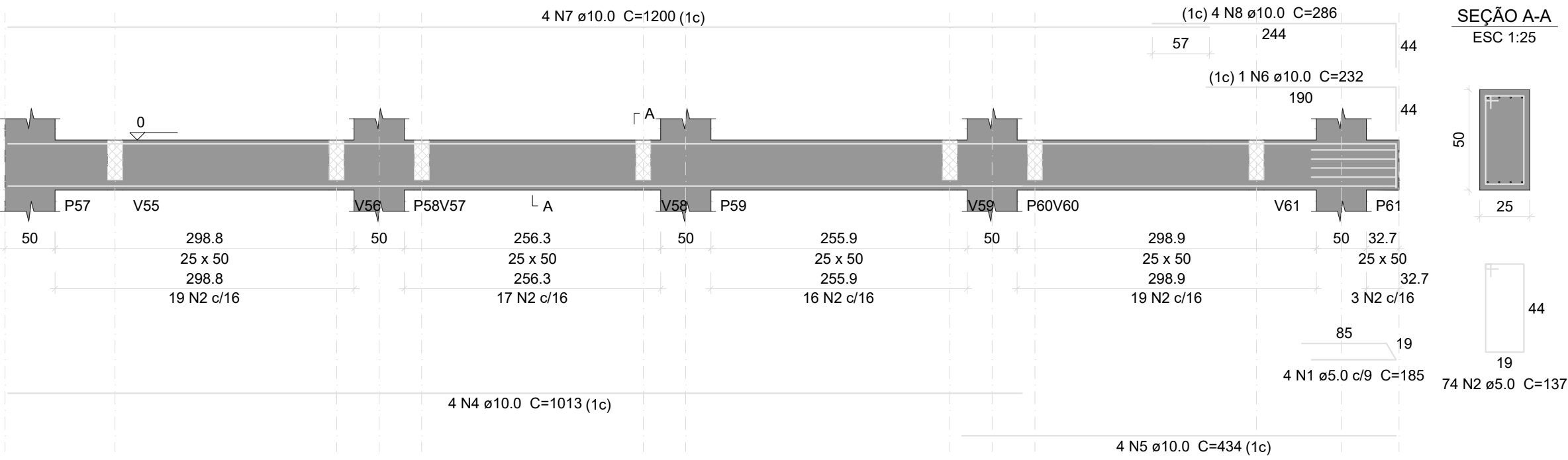


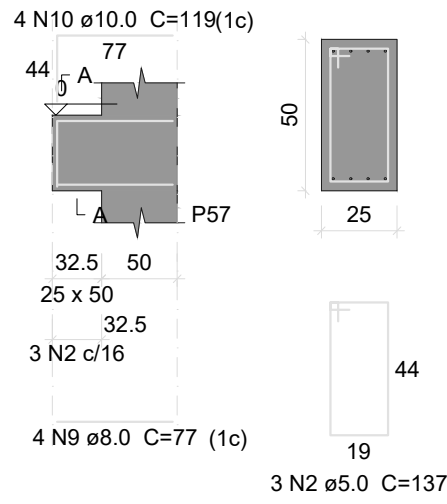
V49

ESC 1:50



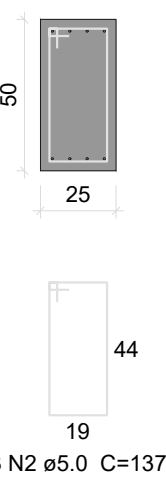
V50

ESC 1:50



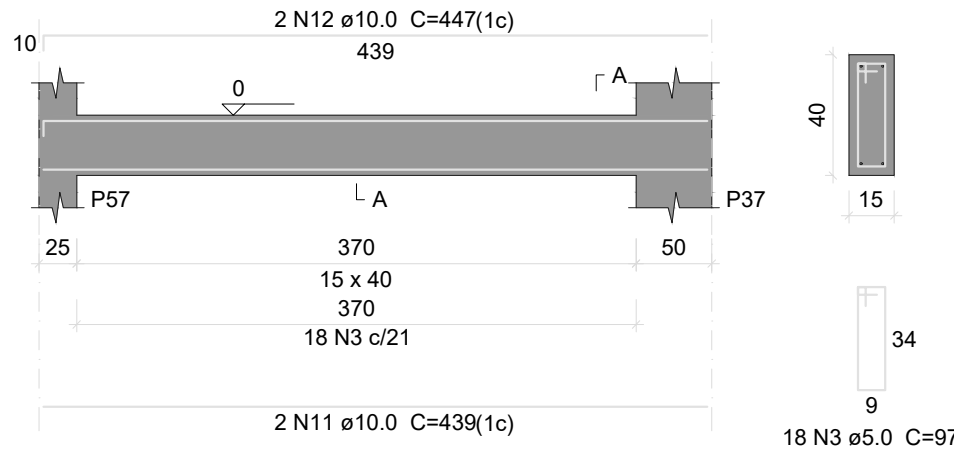
SEÇÃO A-A

ESC 1:25



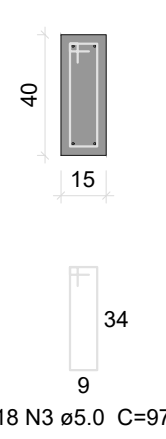
V51

ESC 1:50



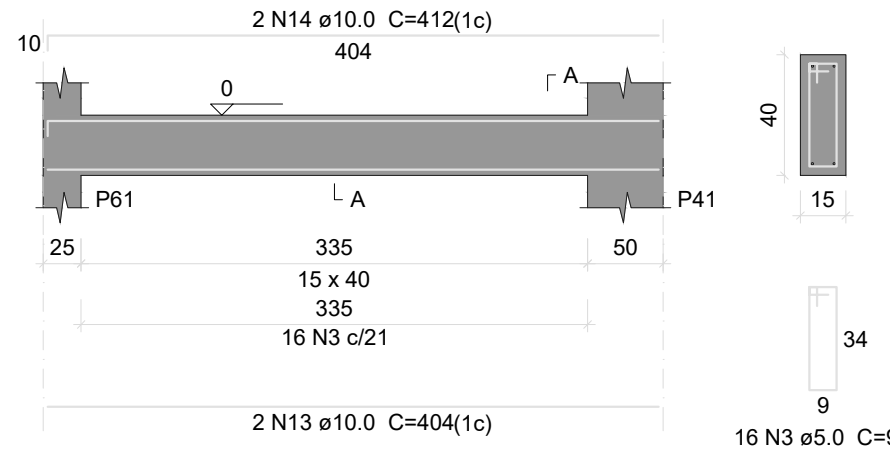
SEÇÃO A-A

ESC 1:25



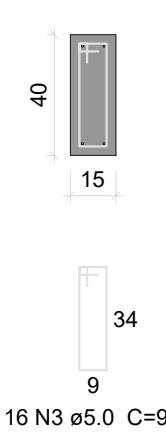
V52

ESC 1:50



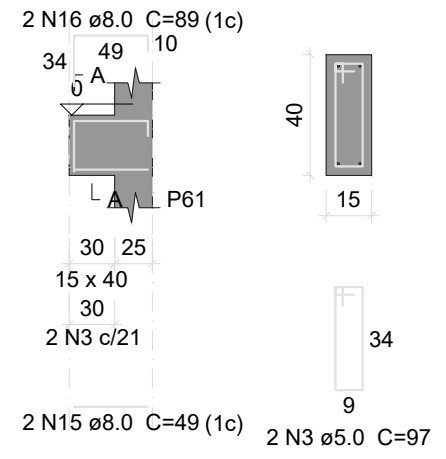
SEÇÃO A-A

ESC 1:25



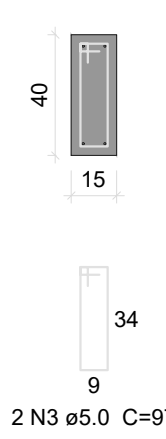
V53

ESC 1:50



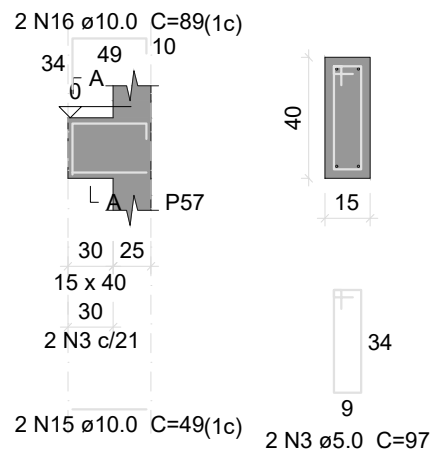
SEÇÃO A-A

ESC 1:25



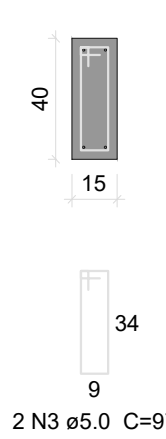
V54

ESC 1:50



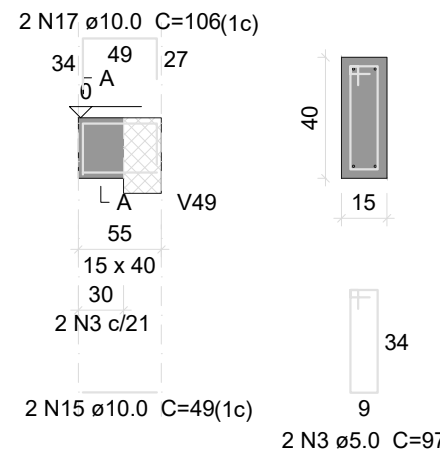
SEÇÃO A-A

ESC 1:25



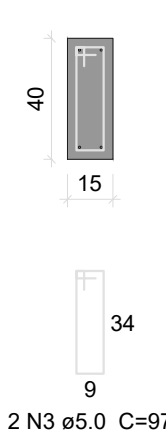
V55

ESC 1:50



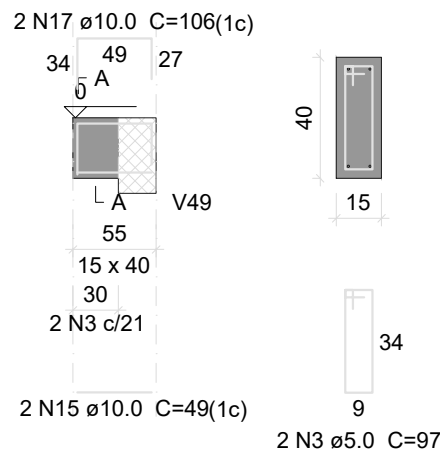
SEÇÃO A-A

ESC 1:25



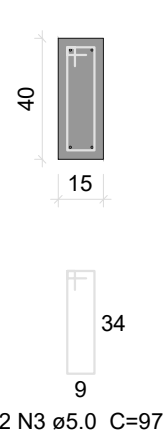
V56

ESC 1:50



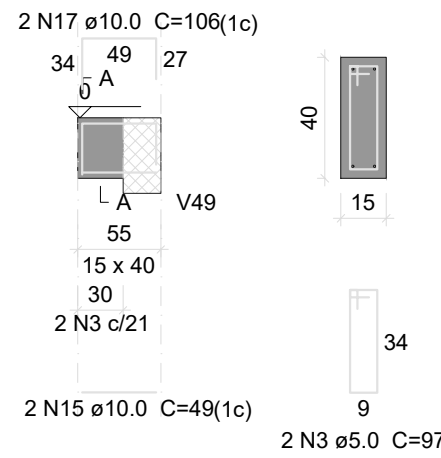
SEÇÃO A-A

ESC 1:25



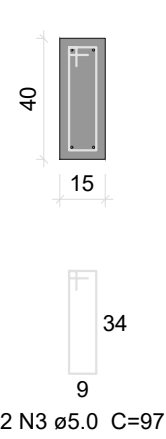
V57

ESC 1:50



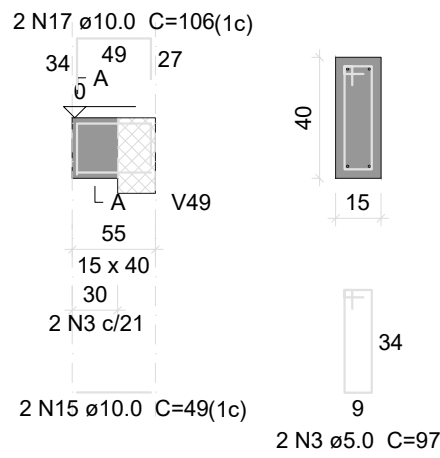
SEÇÃO A-A

ESC 1:25



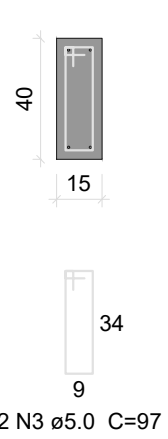
V58

ESC 1:50



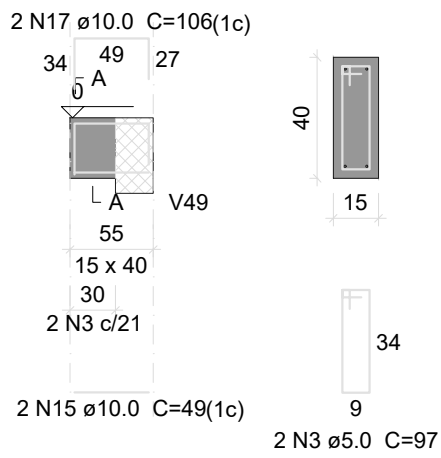
SEÇÃO A-A

ESC 1:25



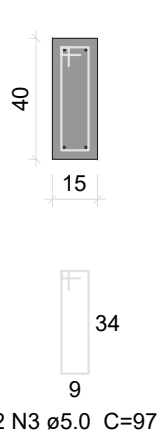
V59

ESC 1:50



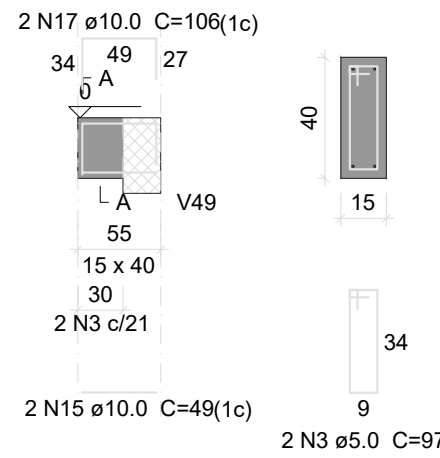
SEÇÃO A-A

ESC 1:25



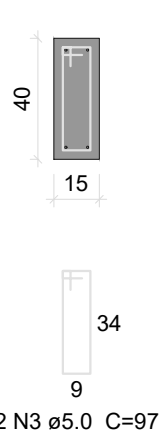
V60

ESC 1:50



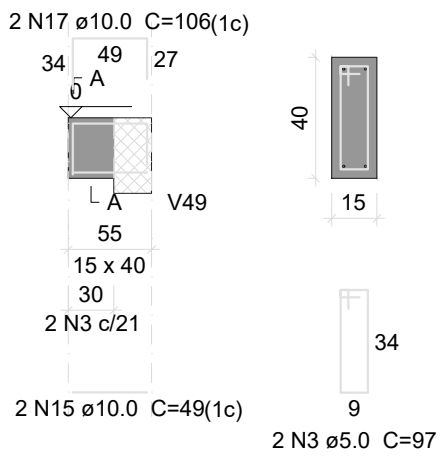
SEÇÃO A-A

ESC 1:25



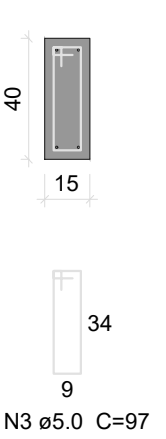
V61

ESC 1:50



SEÇÃO A-A

ESC 1:25



Relação do aço

AÇO	N	DIAM (mm)	QUANT	C.UNIT (cm)	C.TOTAL (cm)
CA60	1	5.0	4	185	740
	2	5.0	77	137	10549
	3	5.0	52	97	5044
CA50	4	10.0	4	1013	4052
	5	10.0	4	434	1736
	6	10.0	1	232	232
	7	10.0	4	1200	4800
	8	10.0	4	286	1144
	9	10.0	4	77	308
	10	10.0	4	119	476
	11	10.0	2	439	878
	12	10.0	2	447	894
	13	10.0	2	404	808
	14	10.0	2	412	824
	15	10.0	18	49	882
	16	10.0	4	89	356
	17	10.0	14	106	1484

Resumo do aço

AÇO	DIAM (mm)	C.TOTAL (m)	PESO + 10 % (kg)
CA50	10.0	186.8	128.1
CA60	5.0	163.4	27.7
PESO TOTAL (kg)			
CA50	128.1		
CA60	27.7		

Volume de concreto (C-25) = 2.11 m³  
Área de forma = 24.78 m²

LAZARO THOME DA SILVA NETO  
ENG. CIVIL  
CREA/SP: 5070668785

PREFEITURA MUNICIPAL DE DIVISA NOVA  
CNPJ:18.243.279/0001-08

CONCRETO fck = 25 MPa ECS = ver na planta	0001
CLIENTE PREFEITURA MUNICIPAL DE DIVISA NOVA - MG	003
OBRA CONSTRUÇÃO DO PRÉDIO DO AMULATÓRIO E LABORATÓRIO	
TÍTULO ARMAÇÃO DAS VIGAS FUNDAÇÃO	
DATA 20/05/2025	01
ESCALA 1:50	
DESCRIÇÃO EST-03-FUN-VIG	
CODIGO	
ENG. LAZARO NETO CREA/SP: 5070668785	