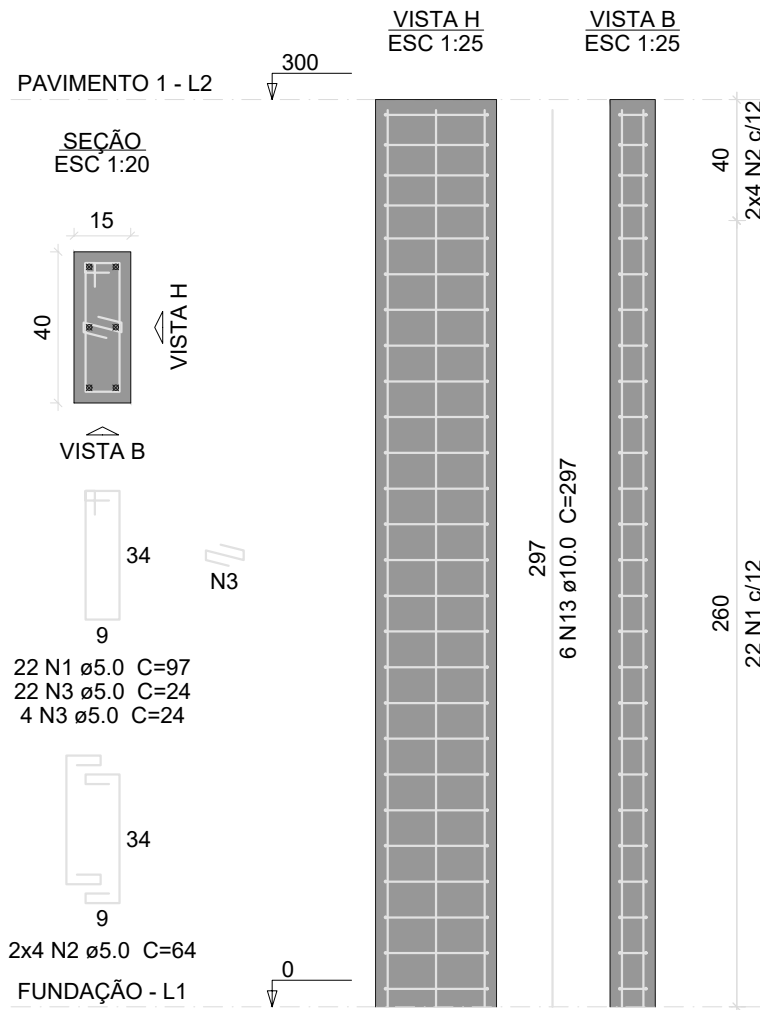
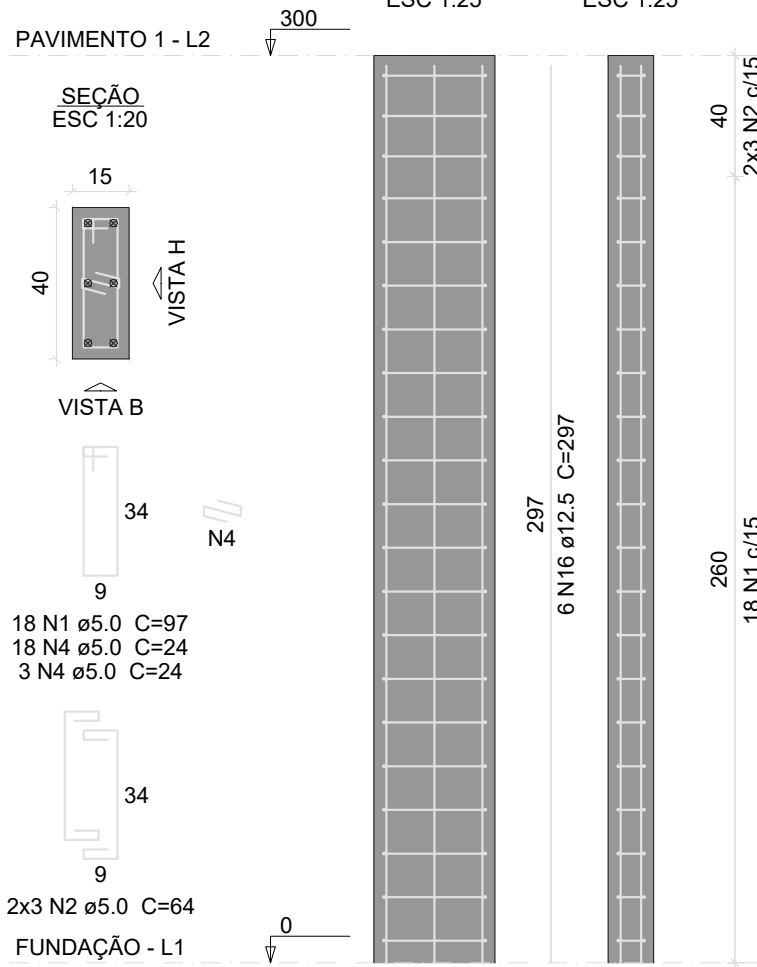


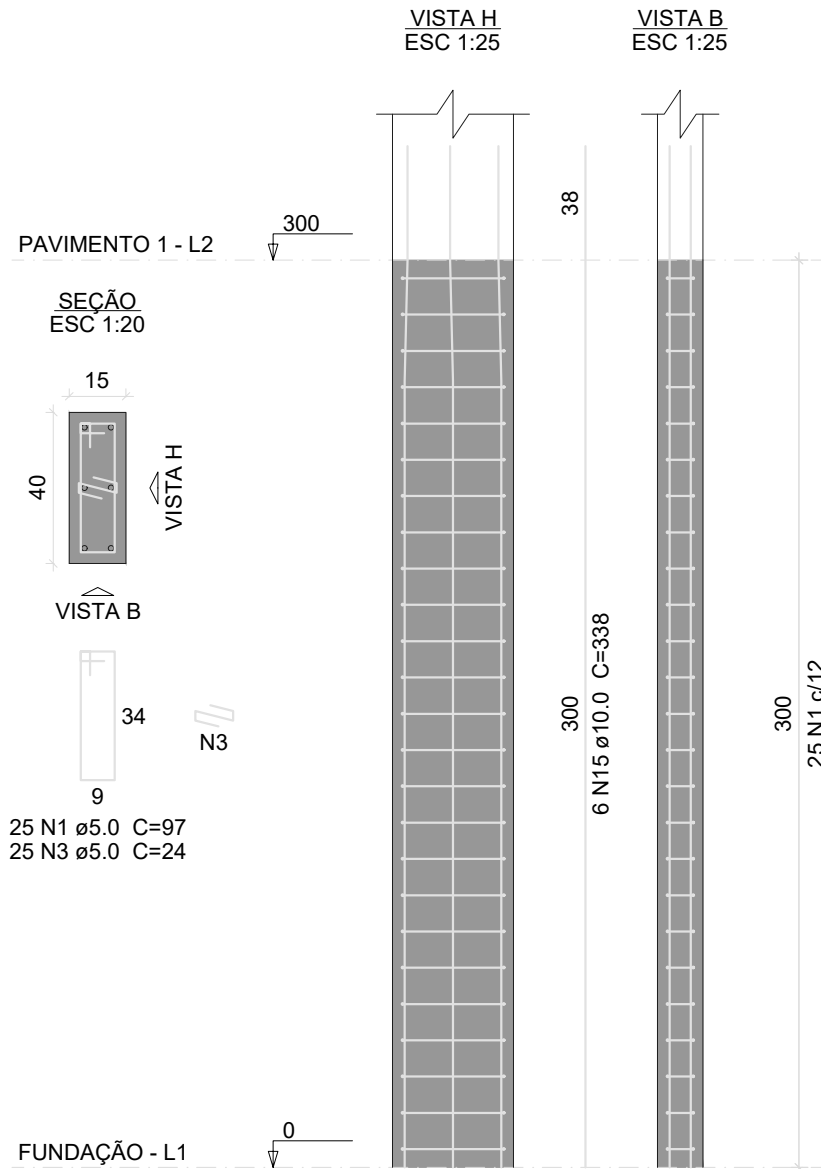
P1=P2=P3=P4=P5=P8=P13=
=P17=P21=P23=P27=P28=
=P31=P32=P33=P39=P40



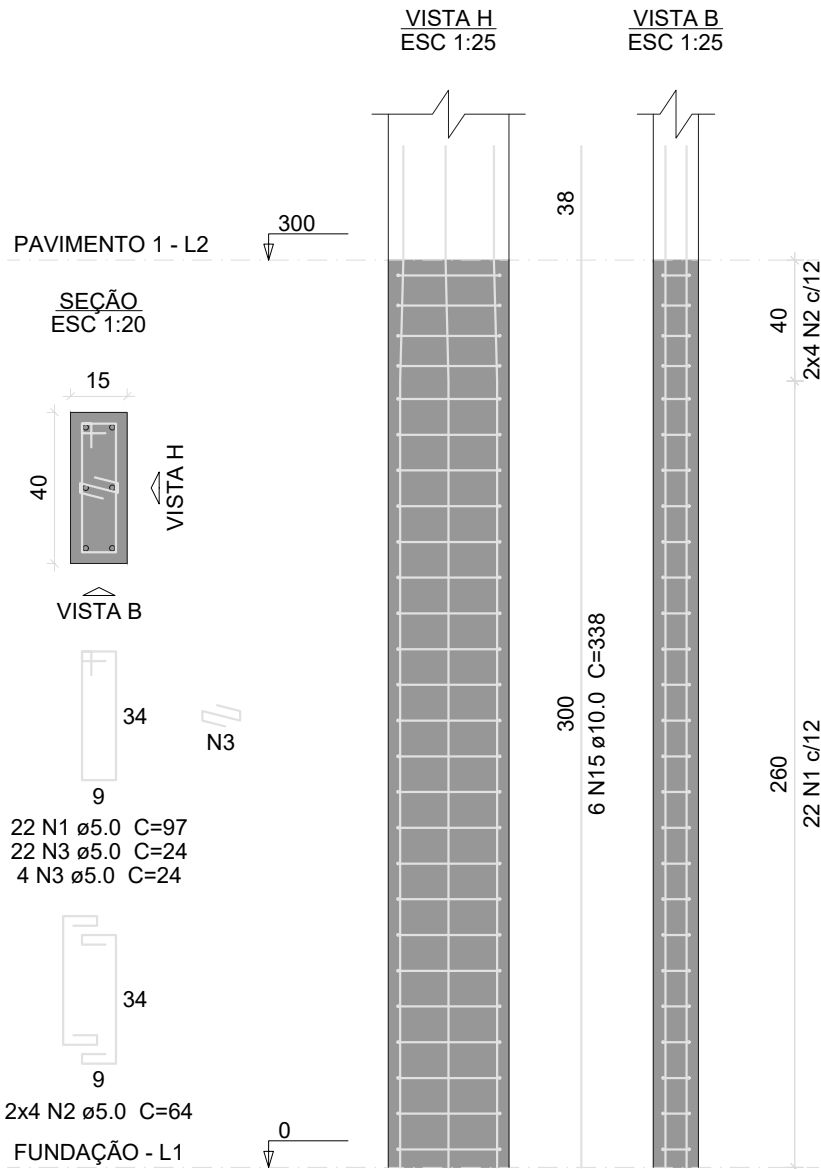
P6=P7



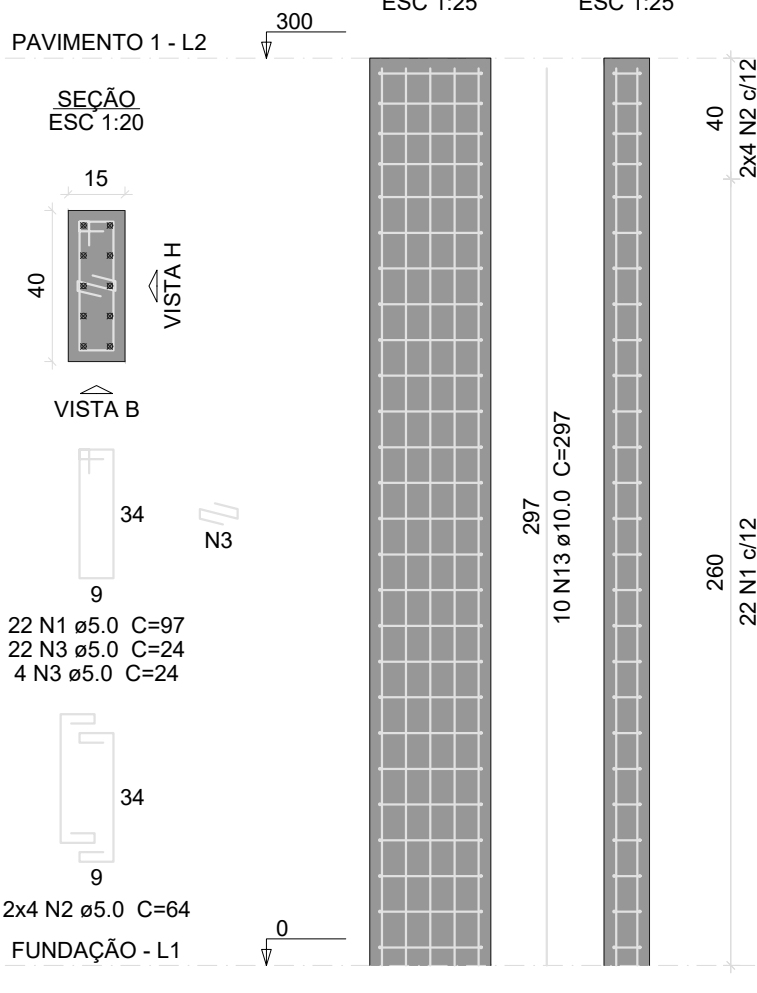
P9=P10=P15=P18=P25=P52



P11=P16=P19=P22=P24



P12



Relação do aço

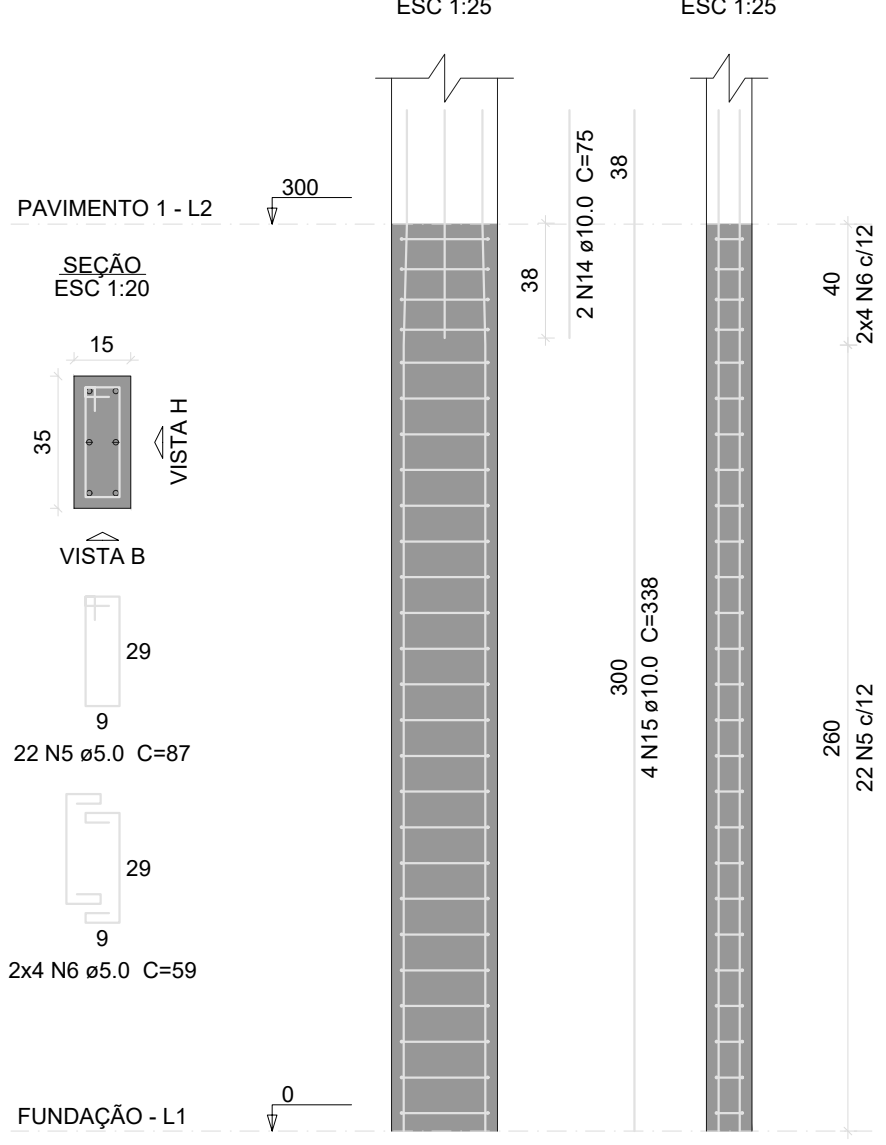
AÇO	N	DIAM (mm)	QUANT	C.UNIT (cm)	C.TOTAL (cm)
CA60	1	5.0	752	97	72944
	2	5.0	236	64	15104
	3	5.0	984	24	23616
	4	5.0	63	24	1512
	5	5.0	22	87	1914
	6	5.0	8	59	472
	7	5.0	60	117	7020
	8	5.0	26	74	1924
	9	5.0	42	137	5754
	10	5.0	60	34	2040
	11	5.0	8	94	752
	12	5.0	52	34	1768
CA50	13	10.0	134	297	39798
	14	10.0	14	75	1050
	15	10.0	102	338	34476
	16	12.5	12	297	3564
	17	12.5	12	94	1128
	18	12.5	6	347	2082
	19	16.0	36	121	4356
	20	16.0	10	360	3600

Resumo do aço

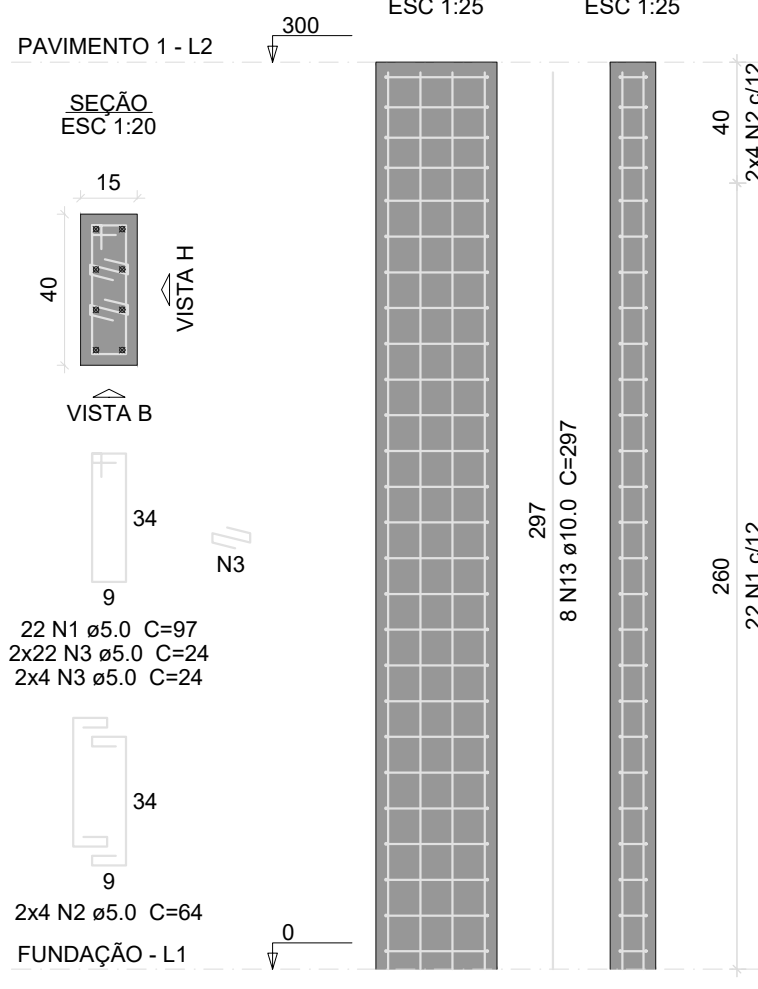
AÇO	DIAM (mm)	C.TOTAL (m)	PESO + 10 % (kg)
CA50	10.0	753.3	510.8
	12.5	67.8	71.8
	16.0	79.6	138.1
CA60	5.0	1348.2	228.6
PESO TOTAL (kg)			
CA50			720.8
CA60			228.6

Volume de concreto (C-25) = 7.7 m³
Área de forma = 135.9 m²

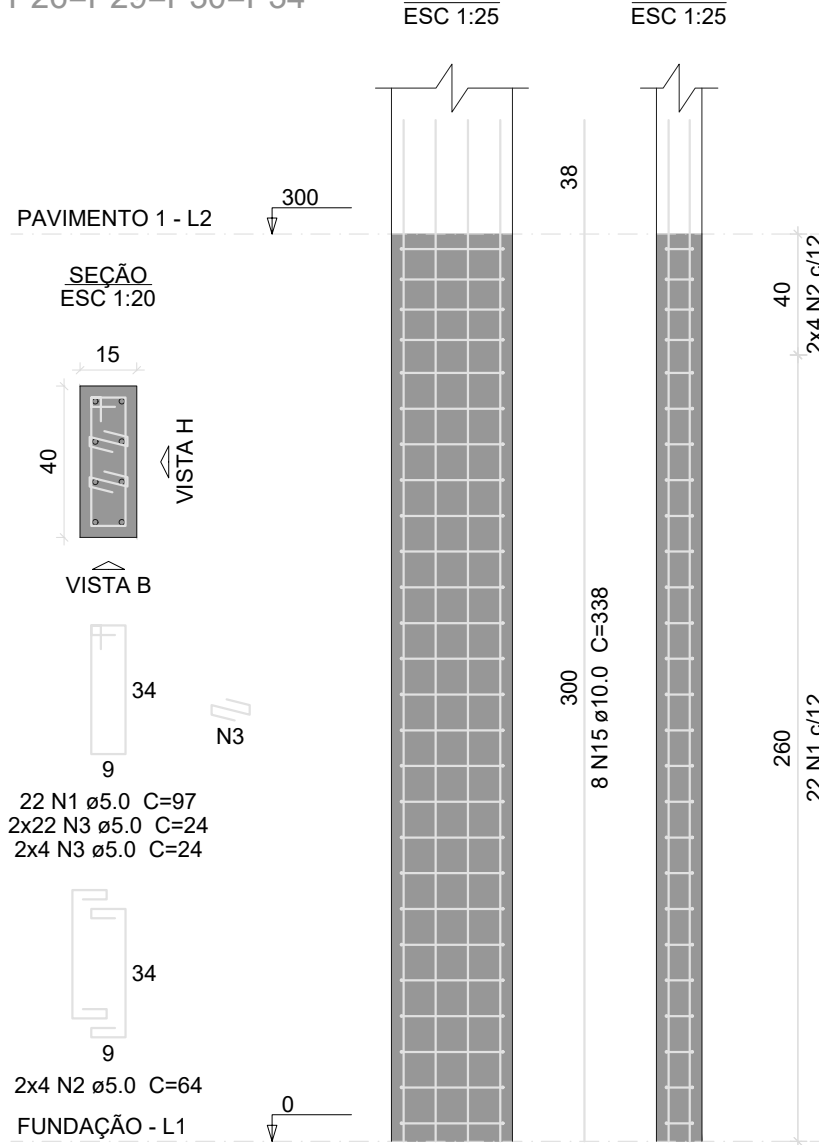
P14



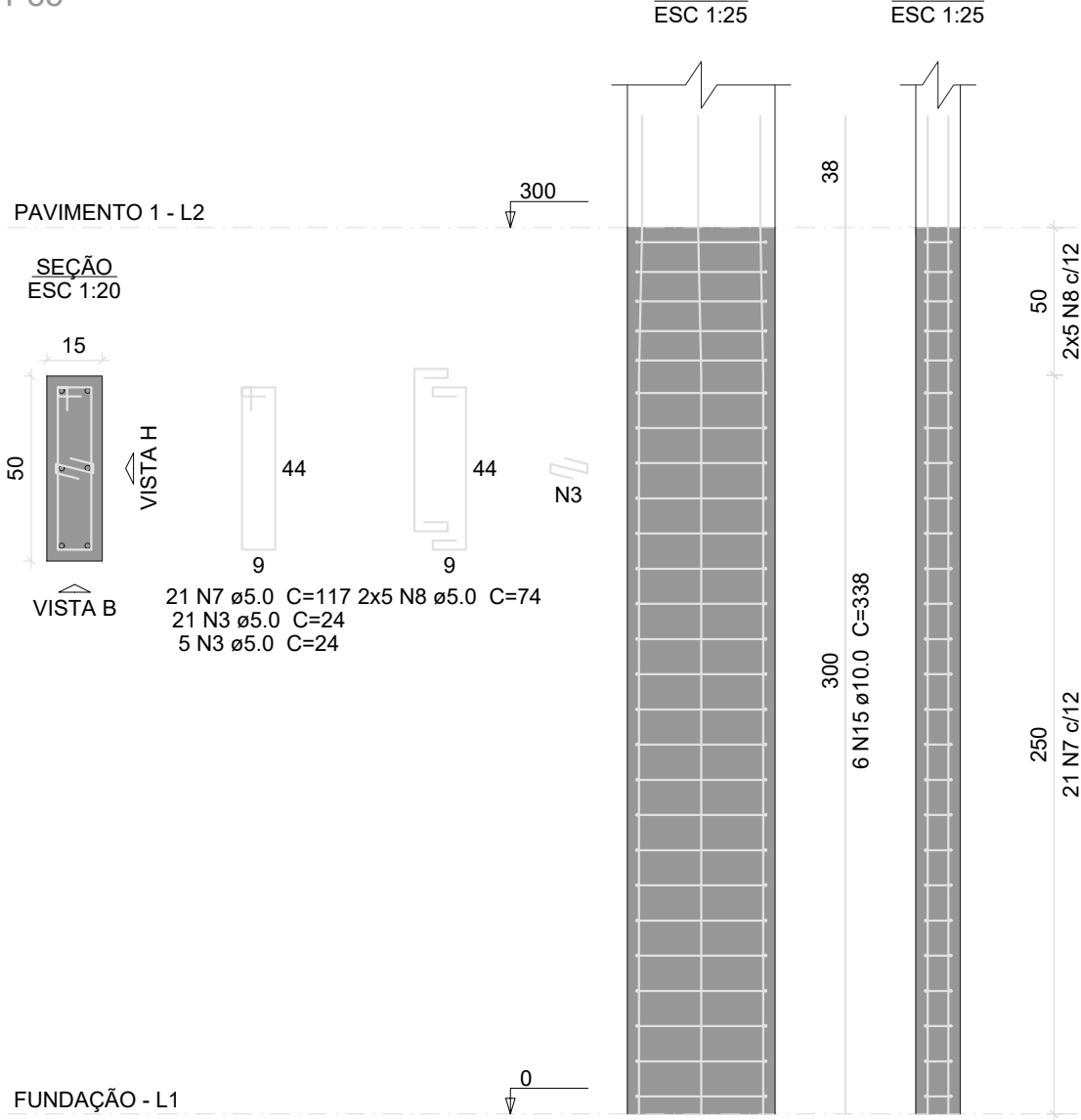
P20



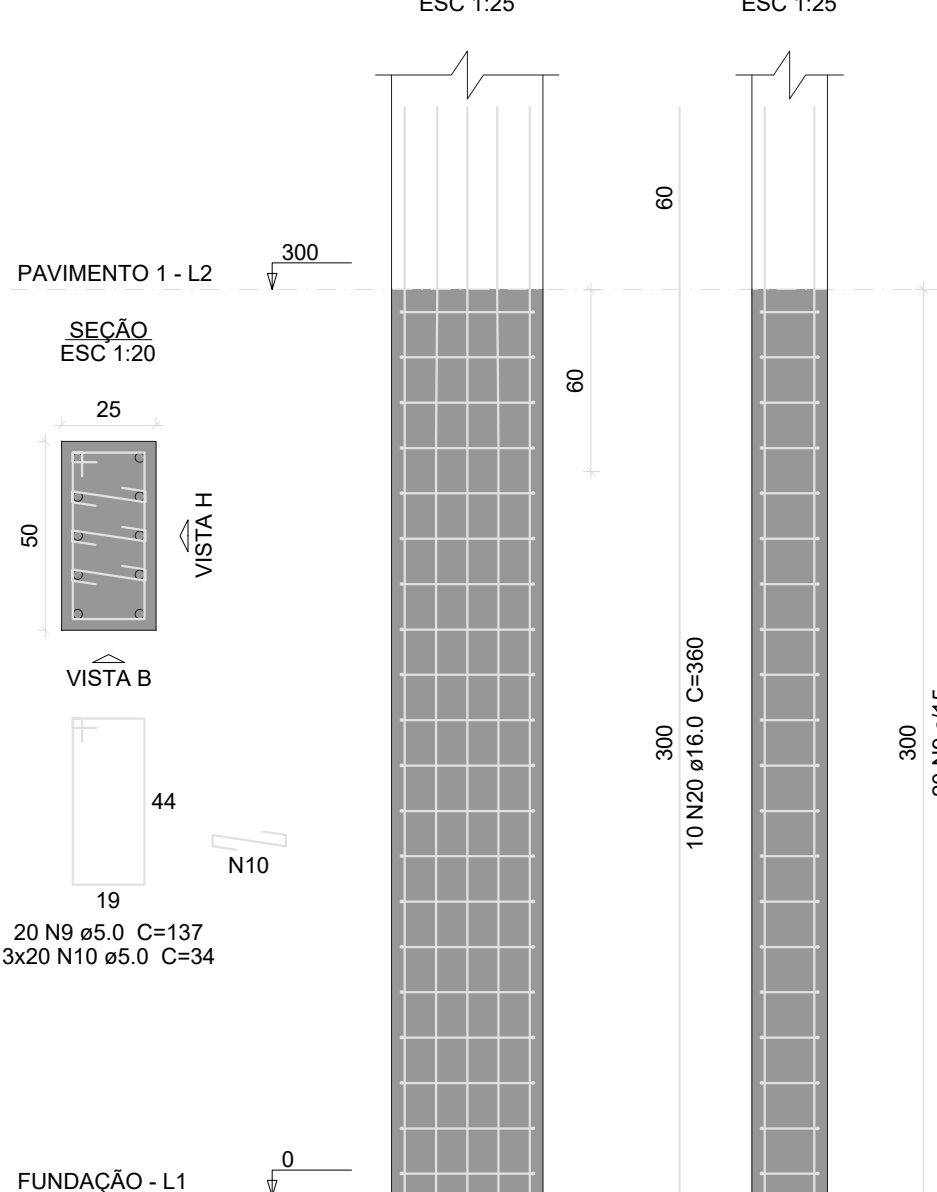
P26=P29=P30=P34



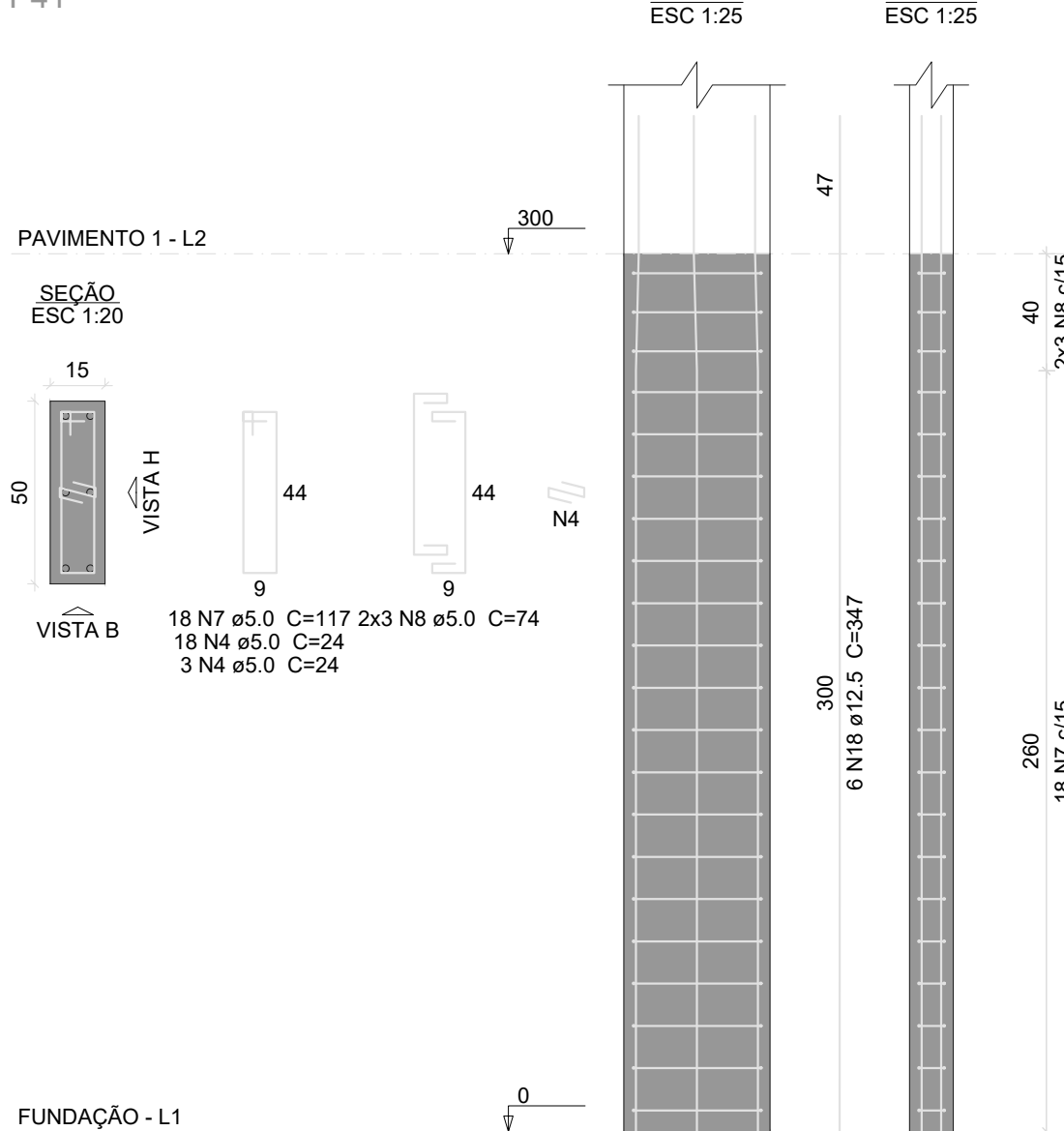
P35



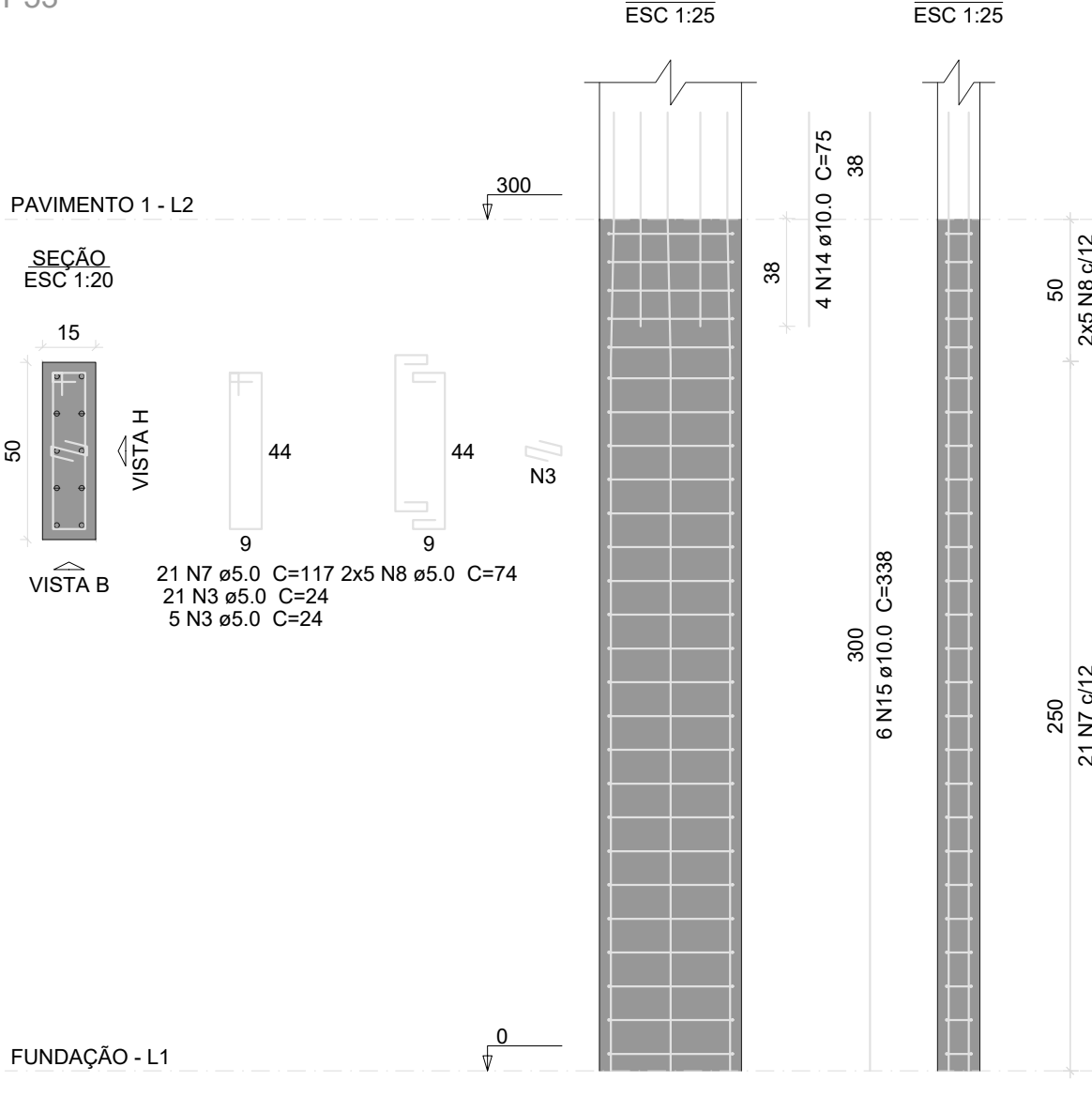
P37=P38



P41



P53



LAZARO THOME DA SILVA NETO
ENG. CIVIL
CREA/SP: 5070668785

PREFEITURA MUNICIPAL DE DIVISA NOVA
CNPJ:18.243.279/0001-08

CONCRETO fck = 25 MPa ECS = ver na planta			0001
CLIENTE PREFEITURA MUNICIPAL DE DIVISA NOVA - MG			008
TÍTULO CONSTRUÇÃO DO PRÉDIO DO AMBULATÓRIO E LABORATÓRIO ARMAÇÃO PILARES			01
DATA 20/05/2025	ESCALA 1:50	DESENHO EST-08-PIL	COORDENADOR ENG. LAZARO NETO CREA/SP: 5070668785