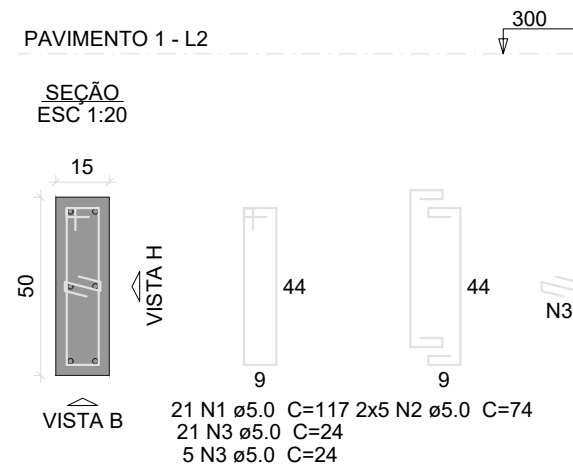


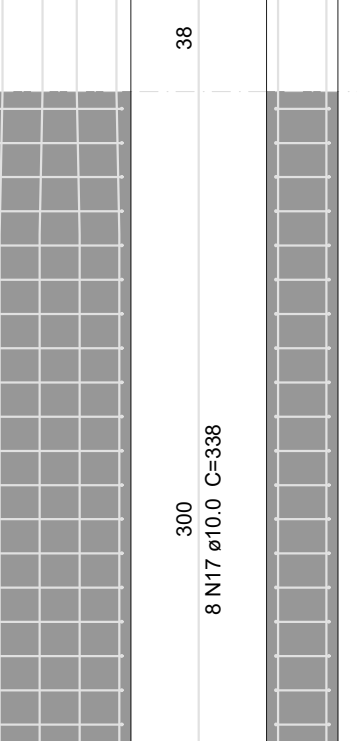
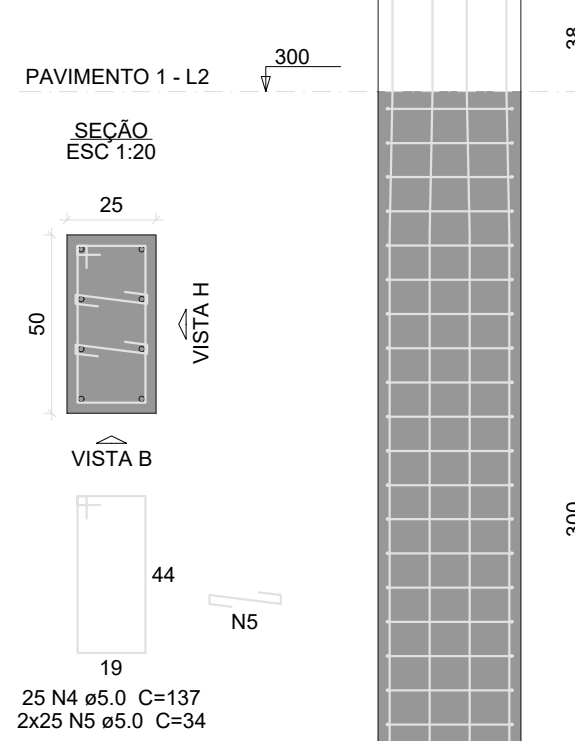
P54=P55



VISTA H
ESC 1:25

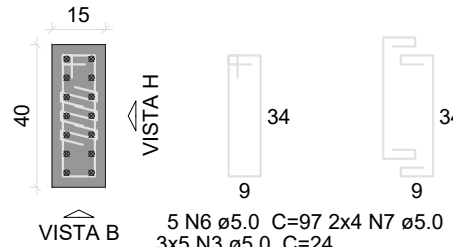
VISTA B
ESC 1:25

P57=P58=P59=P60=P61



P9

COBERTURA - L3

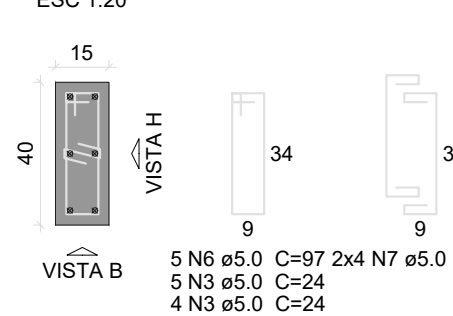


VISTA H
ESC 1:15

VISTA B
ESC 1:15

P10=P11=P15=P16=P18=P19=P22=P24=P25=P52

COBERTURA - L3

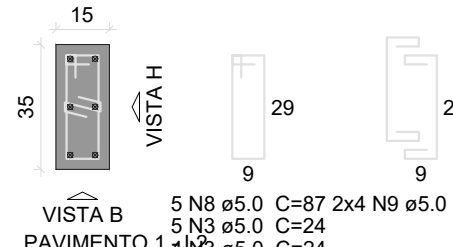


VISTA H
ESC 1:15

VISTA B
ESC 1:15

P14

COBERTURA - L3



VISTA H
ESC 1:20

VISTA B
ESC 1:20

Relação do aço

Pavimento 1:	2xP54	5xP57
Reservatório:	P9	3xP10
	P14	P26
	P35	P37
	P38	P41
	P53	2xP54
	P56	5xP57

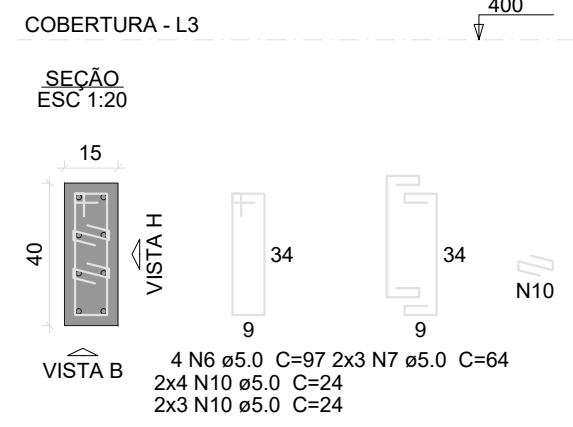
AÇO	N	DIAM (mm)	QUANT	C.UNIT (cm)	C.TOTAL (cm)
CA60	1	5.0	67	117	7839
	2	5.0	68	74	5032
	3	5.0	345	24	8280
	4	5.0	154	137	21098
	5	5.0	350	34	11900
	6	5.0	59	97	5723
	7	5.0	94	64	6016
	8	5.0	5	67	435
	9	5.0	8	59	472
	10	5.0	14	24	336
	11	5.0	58	94	5452
	12	5.0	32	34	1088
	13	8.0	5	138	690
CA50	14	8.0	10	95	950
	15	8.0	50	37	1850
	16	10.0	24	75	1800
	17	10.0	52	338	17576
	18	10.0	190	97	18430
	19	12.5	12	97	1164
	20	16.0	46	97	4462

Resumo do aço

AÇO	DIAM (mm)	C.TOTAL (m)	PESO + 10 % (kg)
CA50	8.0	34.9	15.1
	10.0	378.1	266.4
	12.5	11.7	12.3
	16.0	44.7	77.5
CA60	5.0	736.8	124.9
PESO TOTAL (kg)			
CA50		361.3	
CA60		124.9	

Volume de concreto (C-25) = 4.35 m³
Área de forma = 61.5 m²

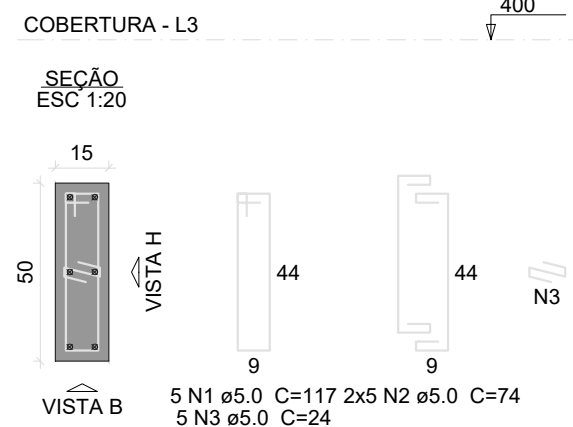
P26=P29=P30=P56



VISTA H
ESC 1:15

VISTA B
ESC 1:15

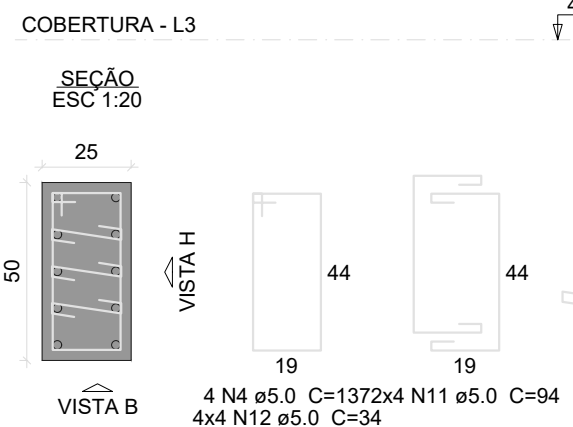
P35



VISTA H
ESC 1:15

VISTA B
ESC 1:15

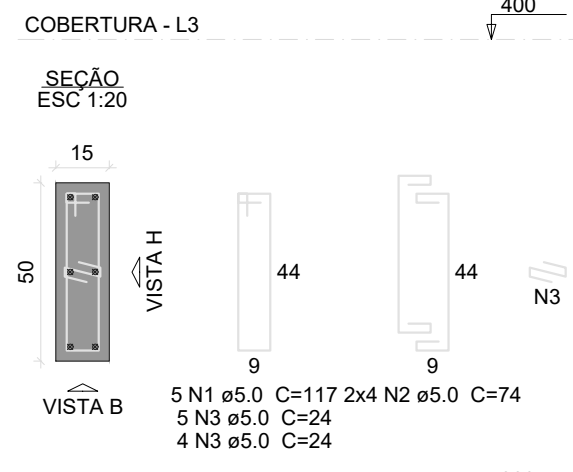
P37=P38



VISTA H
ESC 1:15

VISTA B
ESC 1:15

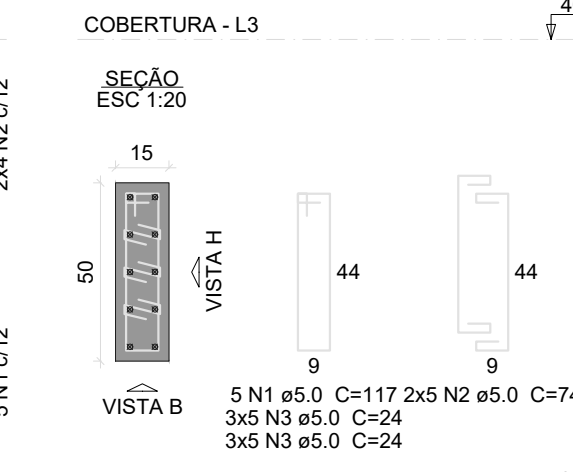
P41



VISTA H
ESC 1:15

VISTA B
ESC 1:15

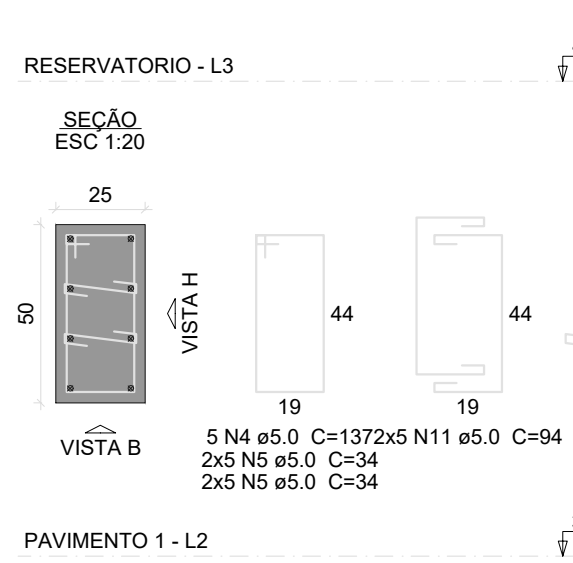
P53=P54=P55



VISTA H
ESC 1:15

VISTA B
ESC 1:15

P57=P58=P59=P60=P61



VISTA H
ESC 1:15

VISTA B
ESC 1:15

LAZARO THOME DA SILVA NETO
ENG. CIVIL
CREA/SP: 5070668785

PREFEITURA MUNICIPAL DE DIVISA NOVA
CNPJ:18.243.279/0001-08

CONCRETO fck = 25 MPa ECS = Ver na planta	0001
CLIENTE PREFEITURA MUNICIPAL DE DIVISA NOVA - MG	009
PROJETO CONSTRUÇÃO DO PRÉDIO DO AMBULATÓRIO E LABORATÓRIO ARMAÇÃO PILARES	01
DATA 20/05/2025	ESCALA 1:50
PROJETO EST-08-PIL	COMO MILAGRADA NETO PROJ. EMB. EMB. EMB.