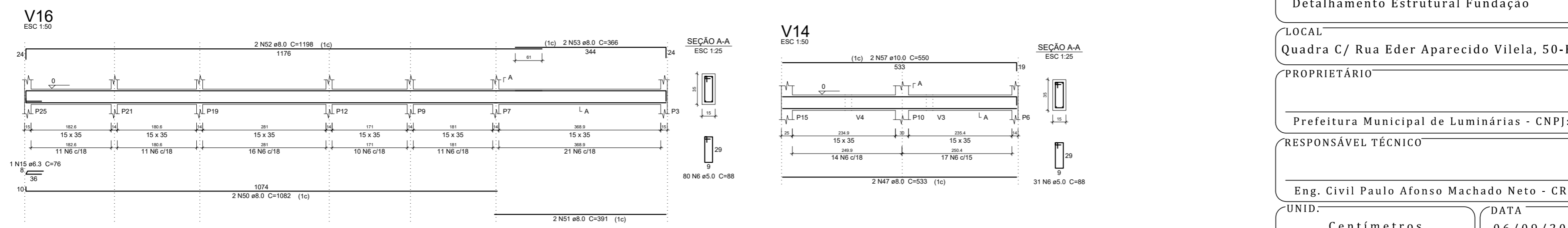
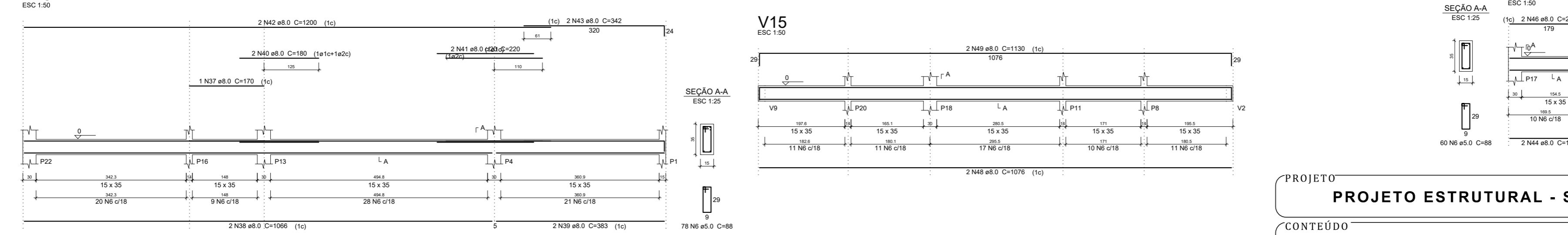
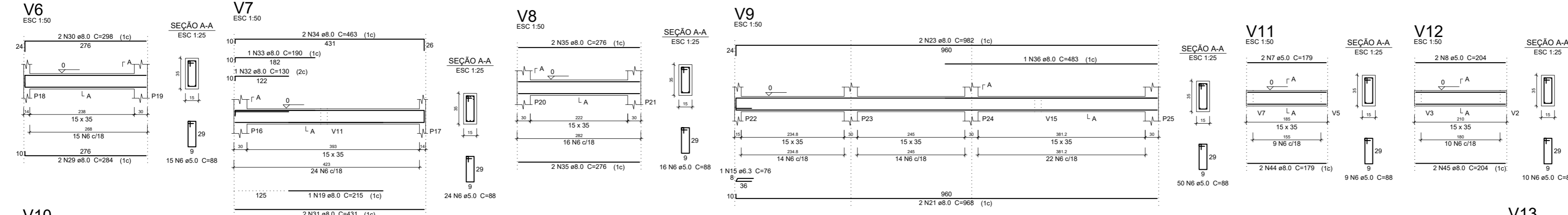
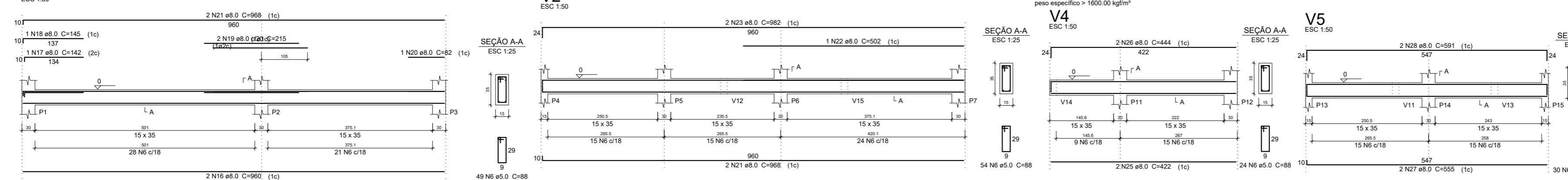
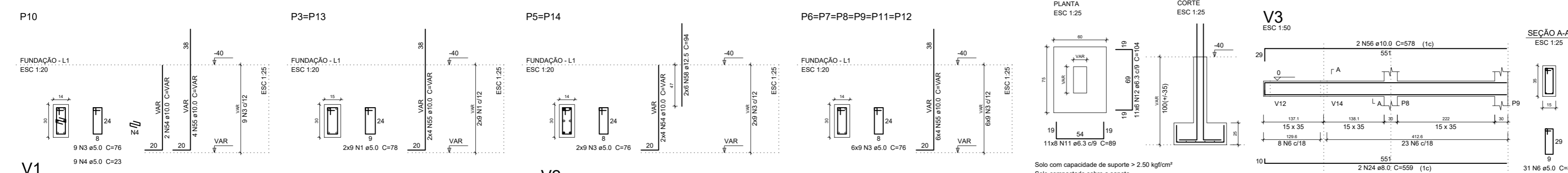


Relação do aço

CAO	N	DIAM	Q	UNIT	C.TOTAL
CA60	1	5.0	81	78	6318
CA60	2	5.0	9	24	216
CA60	3	5.0	135	76	10260
CA60	4	5.0	9	23	207
CA60	5	5.0	9	68	612
CA60	6	5.0	571	88	50248
CA60	7	5.0	2	179	358
CA60	8	5.0	2	204	408
CA60	9	6.3	27	94	2538
CA50	10	6.3	21	109	2289
CA50	11	6.3	88	89	7832
CA50	12	6.3	66	104	6864
CA50	13	6.3	88	84	7392
CA50	14	6.3	66	99	5834
CA50	15	6.3	2	76	152
CA50	16	8.0	2	960	1920
CA50	17	8.0	1	142	142
CA50	18	8.0	1	145	145
CA50	19	8.0	9	215	645
CA50	20	8.0	1	82	82
CA50	21	8.0	6	968	5808
CA50	22	8.0	1	502	502
CA50	23	8.0	4	982	3928
CA50	24	8.0	2	559	1118
CA50	25	8.0	2	422	844
CA50	26	8.0	2	444	888
CA50	27	8.0	2	555	1110
CA50	28	8.0	2	591	1182
CA50	29	8.0	2	284	568
CA50	30	8.0	2	298	596
CA50	31	8.0	2	431	862
CA50	32	8.0	1	130	130
CA50	33	8.0	1	190	190
CA50	34	8.0	2	453	906
CA50	35	8.0	4	276	1104
CA50	36	8.0	1	483	483
CA50	37	8.0	1	170	170
CA50	38	8.0	2	1066	2132
CA50	39	8.0	2	383	766
CA50	40	8.0	2	180	360
CA50	41	8.0	2	220	440
CA50	42	8.0	2	1200	2400
CA50	43	8.0	2	342	684
CA50	44	8.0	4	179	716
CA50	45	8.0	2	204	408
CA50	46	8.0	2	206	412
CA50	47	8.0	2	533	1066
CA50	48	8.0	2	1076	2152
CA50	49	8.0	2	1130	2260
CA50	50	8.0	2	1082	2164
CA50	51	8.0	2	391	782
CA50	52	8.0	2	1198	2396
CA50	53	8.0	2	366	732
CA50	54	10.0	12	VAR	VAR
CA50	55	10.0	92	VAR	VAR
CA50	56	10.0	2	578	1156
CA50	57	10.0	2	550	1100
CA50	58	12.5	12	94	1128



Resumo do aço

CAO	DIAM	C.TOTAL	PESO + 10%
CA50	6.3	336.1	90.4
CA50	8.0	432.2	187.6
CA50	10.0	179.9	122
CA50	12.5	11.3	12
CA60	5.0	686.3	116.4
PESO TOTAL			
CA50		412	
CA60		116.4	

Vol. de concreto total (C-25) = 9.31 m³
Área de forma total = 128.4 m²

PROJETO

PROJETO ESTRUTURAL - SALA DE VACINAÇÃO

CONTEÚDO

Detalhamento Estrutural Fundação

LOCAL

Quadra C/ Rua Eder Aparecido Vilela, 50-Bairro Manoel Garcia de Figueiredo

PROPRIETÁRIO

Prefeitura Municipal de Luminárias - CNPJ: 18.244.301/0001-26

RESPONSÁVEL TÉCNICO

Eng. Civil Paulo Afonso Machado Neto - CREA/MG: 240020/D-MG

UNID. Centímetros DATA 06/09/2024 ESCALA INDICADA FOLHA 01/04